



Beaufort County Public Works Stormwater Infrastructure Project Summary

Project Summary: Paige Point Bluff Outfall

Activity: Routine/Preventive Maintenance

Narrative Description of Project:

Completion: Mar-13

Project improved 615 L.F. of drainage system. Cleaned out 40 L.F. of roadside ditch and 575 L.F. of outfall ditch. Installed (1) bleeder pipe.

2013-617 / Paige Point Bluff Outfall	Labor Hours	Labor Cost	Equipment Cost	Material Cost	Contractor Cost	Indirect Labor	Total Cost
AUDIT / Audit Project	0.5	\$10.45	\$0.00	\$0.00	\$0.00	\$6.62	\$17.06
HAUL / Hauling	2.0	\$43.70	\$21.40	\$27.92	\$0.00	\$24.42	\$117.44
ODCO / Outfall ditch - cleaned out	40.0	\$894.70	\$193.00	\$62.71	\$0.00	\$596.00	\$1,746.41
ONJV / Onsite Job Visit	9.0	\$261.15	\$49.54	\$40.56	\$0.00	\$201.51	\$552.76
RSDCL / Roadside Ditch - Cleanout	28.0	\$626.29	\$119.82	\$127.99	\$0.00	\$417.20	\$1,291.30
2013-617 / Paige Point Bluff Outfall Sub Total	79.5	\$1,836.29	\$383.76	\$259.19	\$0.00	\$1,245.74	\$3,724.98
Grand Total	79.5	\$1,836.29	\$383.76	\$259.19	\$0.00	\$1,245.74	\$3,724.98

Before



During



After



Project: Paige Point Bluff Outfall

Activity: Routine/ Preventive Maintenance

Project #: 2013-617

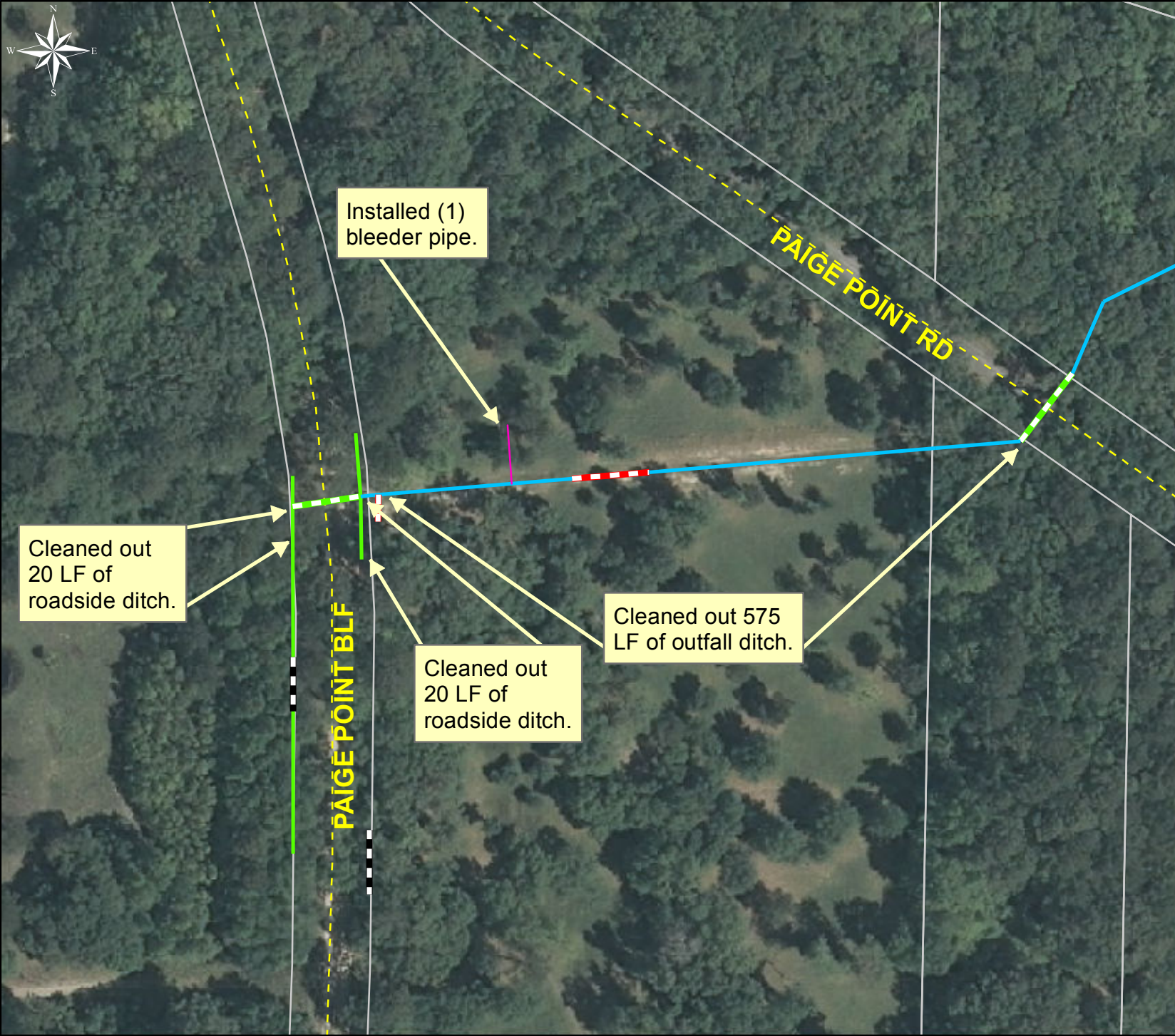
Township: Sheldon

Completed: March 2013

Legend

TYPE

- River
- Creek/Stream
- River/Creek/Marsh BANK
- Channel (fka Outfall)
- Channel Pipe
- Lateral
- Lateral Pipe
- Roadside
- Roadside Pipe
- Road Pipe
- Crossline Pipe
- Driveway Pipe
- Access Pipe
- Bleeder Pipe
- Parcels



1 inch = 116 feet

Prepared By: BC Stormwater Management Utility

Date Print: 4/10/13

File:C:/sethdata/projects/projectmaps/Paige Pt Bluff OF 2013-617